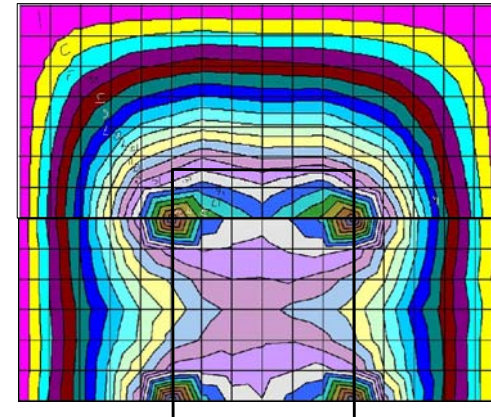


Stage 14m x 20m



Stage 14m x 20m

Metres from ground level

- 14.500-15.000
- 14.000-14.500
- 13.500-14.000
- 13.000-13.500
- 12.500-13.000
- 12.000-12.500
- 11.500-12.000
- 11.000-11.500
- 10.500-11.000
- 10.000-10.500
- 9.500-10.000
- 9.000-9.500
- 8.500-9.000
- 8.000-8.500
- 7.500-8.000
- 7.000-7.500
- 6.500-7.000
- 6.000-6.500
- 5.500-6.000
- 5.000-5.500
- 4.500-5.000

Site plans are prepared from the information available and are our best approximation of what might be possible on this site. We cannot accept any responsibility for their inaccuracy or offer any guarantee that tents can be erected as shown without first undertaking a site survey.

Circles denoting external anchor positions are not to scale. Actual anchors are 50m diameter but multiple anchors are sometimes required.

Dimensions given are best working sizes. Actual dimensions may vary by 5%.

Tents are flexible structures and dimensions will vary with topography. This is particularly true of the Concert Tent where a very small change in angle at the centre can result in up to 1m displacement at the end of the arms.

It is often possible to relocate some anchor positions to avoid particular obstacles.

TITLE		
Stage heights (laser)		
DRAWN FOR		
DRAWN BY		
Toby Rose		
SCALE REF/PARTS		
n/a	4 pole	
DATE	SQM (Int)	SQM (Ext)
11/08/05		

Kayam
theatre & concert structures

T: +44 1692 536025
F: +44 1692 535456
E: info@kayam.com
W: www.kayam.com

Laurels Farmhouse
Worstead
North Walsham
Norfolk
NR28 9W UK

ARENA